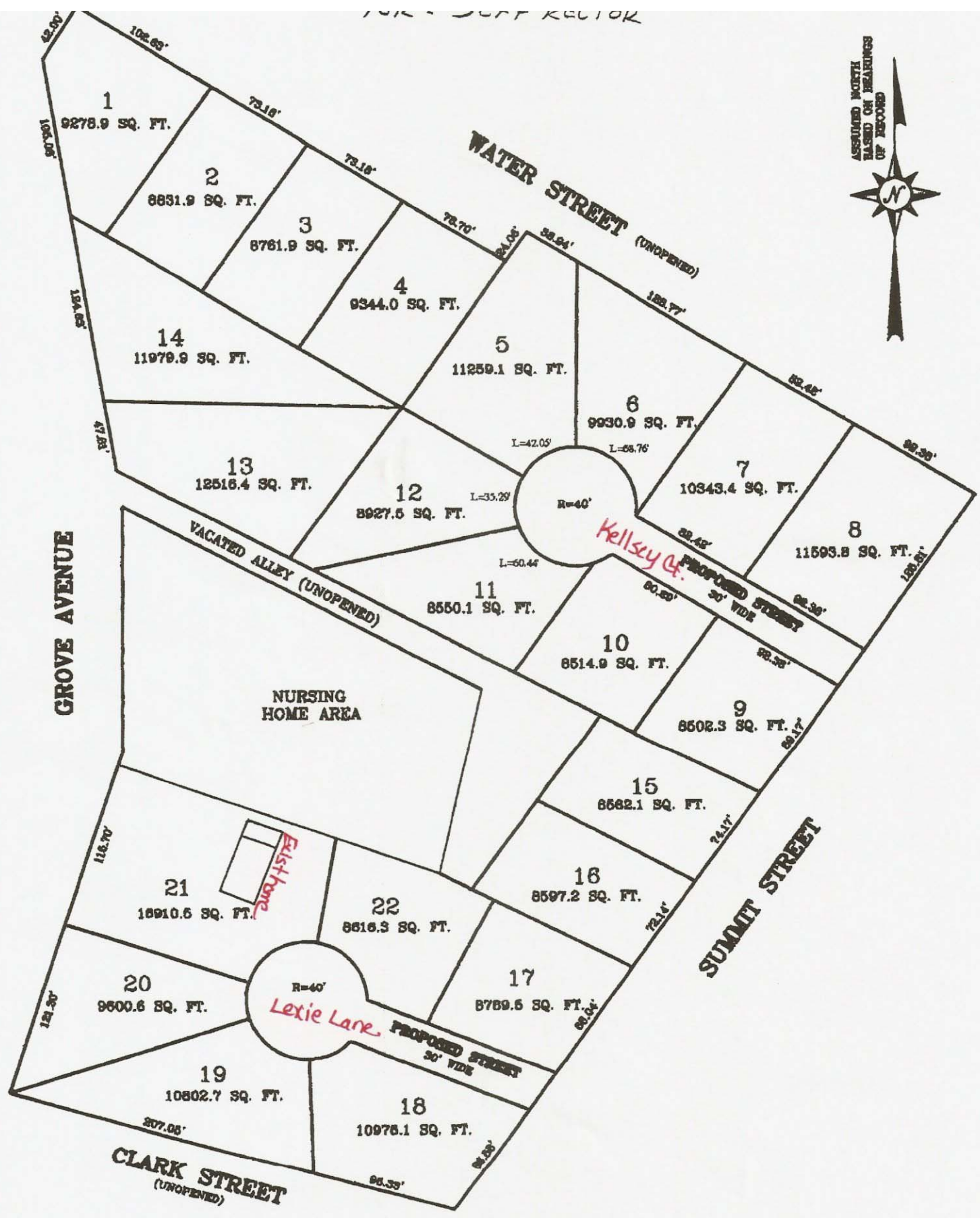


FOR SURVEY RECORD

ASSUMED CORRECT
BASED ON MEASUREMENTS
OF RECORD



GROVE AVENUE

WATER STREET (UNOPENED)

VACATED ALLEY (UNOPENED)

NURSING HOME AREA

Kelsey Ct.
R=40'

PROPOSED STREET
30' WIDE

Lexie Lane
R=40'

PROPOSED STREET
30' WIDE

SUMMIT STREET

CLARK STREET (UNOPENED)